

## Phospho-NMDAR2B (Ser1478) Ab

[Images\(3\)](#)

Cat.#: AF7367	Concn.: ~1mg/ml	Mol.Wt.: 165kDa
Size:	Source: Rabbit	Clonality: Polyclonal

**Application:** WB 1:500-1:2000, IHC 1:50-1:200  
 \*The optimal dilutions should be determined by the end user.

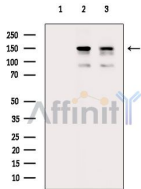
**Reactivity:** Human,Mouse,Rat

**Storage:** Rabbit IgG in phosphate buffered saline , pH 7.4, 150mM NaCl, 0.02% sodium azide and 50% glycerol. Store at -20 °C. Stable for 12 months from date of receipt.

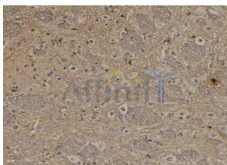
**Purification:** The Ab is from purified rabbit serum by affinity purification via sequential chromatography on phospho-peptide and non-phospho-peptide affinity columns.

**Immunogen:** A synthesized peptide derived from human NMDAR2B around the phosphorylation site of Ser1478.

**Uniprot:** Q13224



Western blot analysis of extracts from various samples, using Phospho-NMDAR2B (Ser1478) Ab.  
 Lane 1: Pc12 cells(heat-shock treatment), blocked with antigen-specific peptides.  
 Lane 2: Pc12 cells(heat-shock treatment).  
 Lane 3: 3t3-11 cells(heat-shock treatment).



AF7367 at 1/100 staining rat brain tissue sections by IHC-P. The tissue was formaldehyde fixed and a heat mediated antigen retrieval step in citrate buffer was performed. The tissue was then blocked and incubated with the Ab for 1.5 hours at 22°C. An HRP conjugated goat anti-rabbit Ab was used as the secondary Ab.

**IMPORTANT:** For western blot, incubate membrane with diluted primary Ab in 5% w/v milk , 1X TBS, 0.1% Tween@20 at 4°C with gentle shaking, overnight.

For Research Use Only. Not for use in diagnostic and therapeutic procedures. Not for resale without express authorization.