

## Phospho-CBL (Tyr674) Ab

[Images\(5\)](#)

Cat.#: AF3225                                      Concn.: ~1mg/ml                                      Mol.Wt.: 120kDa  
Size:                                                      Source: Rabbit                                              Clonality: Polyclonal

Application:                                      WB 1:500-1:2000, IHC 1:50-1:200, IF/ICC 1:100-1:500  
\*The optimal dilutions should be determined by the end user.

Reactivity:                                      Human,Mouse,Rat

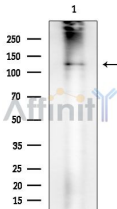
Storage:                                      Rabbit IgG in phosphate buffered saline , pH 7.4, 150mM NaCl, 0.02% sodium azide and 50% glycerol. Store at -20 °C. Stable for 12 months from date of receipt.

Purification:                                      The Ab is from purified rabbit serum by affinity purification via sequential chromatography on phospho-peptide and non-phospho-peptide affinity columns.

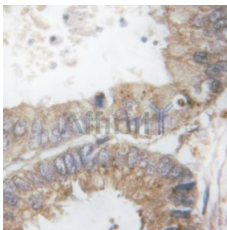
Immunogen:                                      A synthesized peptide derived from human CBL around the phosphorylation site of Tyr674.

Uniprot:                                      P22681

Description:                                      Cbl an adapter protein that functions as a negative regulator of many signaling pathways that start from receptors at the cell surface.



Western blot analysis of extracts from Rat brain, using Phospho-CBL (Tyr674) Ab at 1/1000 dilution.  
Observed bands:125kD.



AF3225 at 1/200 staining Human breast cancer tissue sections by IHC-P. The tissue was formaldehyde fixed and a heat mediated antigen retrieval step in citrate buffer was performed. The tissue was then blocked and incubated with the Ab for 1.5 hours at 22°C. An HRP conjugated goat anti-rabbit Ab was used as the secondary Ab.

**IMPORTANT:** For western blot, incubate membrane with diluted primary Ab in 5% w/v milk , 1X TBS, 0.1% Tween@20 at 4°C with gentle shaking, overnight.



**Affinity Biosciences**

website: [www.affbiotech.com](http://www.affbiotech.com)

order: [order@affbiotech.com](mailto:order@affbiotech.com)

---

For Research Use Only. Not for use in diagnostic and therapeutic procedures. Not for resale without express authorization.