

Phospho-PKA alpha/beta/gamma CAT (Thr198) Ab

[References\(8\)](#) [Images\(13\)](#)

Cat.#: AF7246 Concn.: ~1mg/ml Mol.Wt.: 40kDa
Size: Source: Rabbit Clonality: Polyclonal

Application: WB 1:500-1:2000, IHC 1:50-1:200
*The optimal dilutions should be determined by the end user.

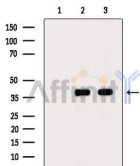
Reactivity: Human,Mouse,Rat

Storage: Rabbit IgG in phosphate buffered saline , pH 7.4, 150mM NaCl, 0.02% sodium azide and 50% glycerol. Store at -20 °C. Stable for 12 months from date of receipt.

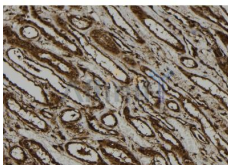
Purification: The Ab is from purified rabbit serum by affinity purification via sequential chromatography on phospho-peptide and non-phospho-peptide affinity columns.

Immunogen: A synthesized peptide derived from human PKA alpha/beta/gamma CAT around the phosphorylation site of Thr198.

Uniprot: P17612/P22694/P22612



Western blot analysis of extracts from various samples, using Phospho-PKA alpha/beta/gamma CAT (Thr198) Ab.
Lane 1: Hela cells(heat-shock treatment), blocked with antigen-specific peptides.
Lane 2: Hela cells(heat-shock treatment).
Lane 3: Raw264.7 cells(serum starvation treatment).



AF7246 at 1/100 staining human kidney tissue sections by IHC-P. The tissue was formaldehyde fixed and a heat mediated antigen retrieval step in citrate buffer was performed. The tissue was then blocked and incubated with the Ab for 1.5 hours at 22°C. An HRP conjugated goat anti-rabbit Ab was used as the secondary Ab.

IMPORTANT: For western blot, incubate membrane with diluted primary Ab in 5% w/v milk , 1X TBS, 0.1% Tween@20 at 4°C with gentle shaking, overnight.

For Research Use Only. Not for use in diagnostic and therapeutic procedures. Not for resale without express authorization.