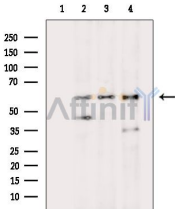


## Phospho-PKM2 (Tyr370) Ab

[Images\(5\)](#)

Cat.#: AF7229	Concn.: ~1mg/ml	Mol.Wt.: 60kd
Size:	Source: Rabbit	Clonality: Polyclonal

Application:	WB 1:500-1:2000, IHC 1:50-1:200 *The optimal dilutions should be determined by the end user.
Reactivity:	Human,Mouse,Rat
Storage:	Rabbit IgG in phosphate buffered saline , pH 7.4, 150mM NaCl, 0.02% sodium azide and 50% glycerol. Store at -20 °C. Stable for 12 months from date of receipt.
Purification:	The Ab is from purified rabbit serum by affinity purification via sequential chromatography on phospho-peptide and non-phospho-peptide affinity columns.
Immunogen:	A synthesized peptide derived from human PKM2 around the phosphorylation site of Tyr370.
Uniprot:	P14618



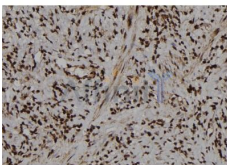
Western blot analysis of extracts from various samples, using Phospho-PKM2 (Tyr370) Ab.

Lane 1: Mouse brain, blocked with antigen-specific peptides.

Lane 2: Mouse brain.

Lane 3: Hela cells(heat-shock treatment).

Lane 4: Raw264.7 cells(serum starvation treatment).



AF7229 at 1/100 staining human gastric cancer tissue sections by IHC-P. The tissue was formaldehyde fixed and a heat mediated antigen retrieval step in citrate buffer was performed. The tissue was then blocked and incubated with the Ab for 1.5 hours at 22°C. An HRP conjugated goat anti-rabbit Ab was used as the secondary Ab.

**IMPORTANT:** For western blot, incubate membrane with diluted primary Ab in 5% w/v milk , 1X TBS, 0.1% Tween@20 at 4°C with gentle shaking, overnight.

For Research Use Only. Not for use in diagnostic and therapeutic procedures. Not for resale without express authorization.