

Phospho-A-RAF (Ser214) Ab

[Images\(2\)](#)

Cat.#: AF7214 Concn.: ~1mg/ml Mol.Wt.: 68kDa
Size: Source: Rabbit Clonality: Polyclonal

Application: WB 1:500-1:2000
 *The optimal dilutions should be determined by the end user.

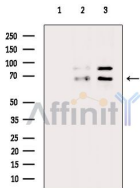
Reactivity: Human,Mouse,Rat

Storage: Rabbit IgG in phosphate buffered saline , pH 7.4, 150mM NaCl, 0.02% sodium azide and 50% glycerol. Store at -20 °C. Stable for 12 months from date of receipt.

Purification: The Ab is from purified rabbit serum by affinity purification via sequential chromatography on phospho-peptide and non-phospho-peptide affinity columns.

Immunogen: A synthesized peptide derived from human A-RAF around the phosphorylation site of Ser214.

Uniprot: P10398



Western blot analysis of extracts from various samples, using Phospho-A-RAF (Ser214) Ab.

Lane 1: Hela cells(heat-shock treatment), blocked with antigen-specific peptides.

Lane 2: Hela cells(heat-shock treatment).

Lane 3: Raw264.7 cells(serum starvation treatment).

IMPORTANT: For western blot, incubate membrane with diluted primary Ab in 5% w/v milk , 1X TBS, 0.1% Tween@20 at 4°C with gentle shaking, overnight.

For Research Use Only. Not for use in diagnostic and therapeutic procedures. Not for resale without express authorization.