

## Phospho-Hck (Tyr522) Ab

[Images\(2\)](#)

Cat.#: AF7211  
Size:

Concn.: ~1mg/ml  
Source: Rabbit

Mol.Wt.: 59kDa  
Clonality: Polyclonal

Application:

WB 1:500-1:2000

\*The optimal dilutions should be determined by the end user.

Reactivity:

Human,Mouse

Storage:

Rabbit IgG in phosphate buffered saline , pH 7.4, 150mM NaCl, 0.02% sodium azide and 50% glycerol. Store at -20 °C. Stable for 12 months from date of receipt.

Purification:

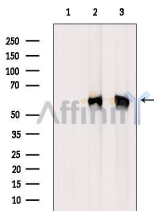
The Ab is from purified rabbit serum by affinity purification via sequential chromatography on phospho-peptide and non-phospho-peptide affinity columns.

Immunogen:

A synthesized peptide derived from human Hck around the phosphorylation site of Tyr522.

Uniprot:

P08631



Western blot analysis of extracts from various samples, using Phospho-HCK (Tyr522) Ab.

Lane 1: Serum starvation treated RAW264.7 cells, blocked with antigen-specific peptides,

Lane 2: Serum starvation treated RAW264.7 cells,

Lane 3: Heat-shock treated HepG2 cells.

**IMPORTANT:** For western blot, incubate membrane with diluted primary Ab in 5% w/v milk , 1X TBS, 0.1% Tween@20 at 4°C with gentle shaking, overnight.

For Research Use Only. Not for use in diagnostic and therapeutic procedures. Not for resale without express authorization.