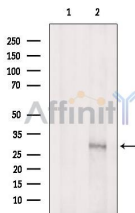


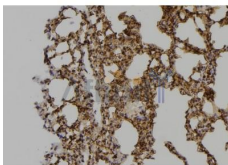
Phospho-PZR (Tyr241) Ab

[Images\(4\)](#)

Cat.#: AF7165	Concn.: ~1mg/ml	Mol.Wt.: 29kDa
Size:	Source: Rabbit	Clonality: Polyclonal
Application:	WB 1:500-1:2000, IHC 1:50-1:200 *The optimal dilutions should be determined by the end user.	
Reactivity:	Human,Mouse,Rat	
Storage:	Rabbit IgG in phosphate buffered saline , pH 7.4, 150mM NaCl, 0.02% sodium azide and 50% glycerol. Store at -20 °C. Stable for 12 months from date of receipt.	
Purification:	The Ab is from purified rabbit serum by affinity purification via sequential chromatography on phospho-peptide and non-phospho-peptide affinity columns.	
Immunogen:	A synthesized peptide derived from human PZR around the phosphorylation site of Tyr241.	
Uniprot:	O95297	



Western blot analysis of extracts from H₂O₂ treated C6 cells, using Phospho-PZR (Tyr241) Ab. The lane on the left was treated with blocking peptide.



AF7165 at 1/100 staining mouse lung tissue sections by IHC-P. The tissue was formaldehyde fixed and a heat mediated antigen retrieval step in citrate buffer was performed. The tissue was then blocked and incubated with the Ab for 1.5 hours at 22°C. An HRP conjugated goat anti-rabbit Ab was used as the secondary Ab.

IMPORTANT: For western blot, incubate membrane with diluted primary Ab in 5% w/v milk , 1X TBS, 0.1% Tween@20 at 4°C with gentle shaking, overnight.

For Research Use Only. Not for use in diagnostic and therapeutic procedures. Not for resale without express authorization.