

## Phospho-ATF1 (Ser63) Ab

[References\(1\)](#) [Images\(2\)](#)

Cat.#: AF3208  
Size:

Concn.: ~1mg/ml  
Source: Rabbit

Mol.Wt.: 29kDa  
Clonality: Polyclonal

Application:

WB 1:500-1:2000, IF/ICC 1:100-1:500

\*The optimal dilutions should be determined by the end user.

Reactivity:

Human,Mouse

Storage:

Rabbit IgG in phosphate buffered saline , pH 7.4, 150mM NaCl, 0.02% sodium azide and 50% glycerol. Store at -20 °C. Stable for 12 months from date of receipt.

Purification:

The Ab is from purified rabbit serum by affinity purification via sequential chromatography on phospho-peptide and non-phospho-peptide affinity columns.

Immunogen:

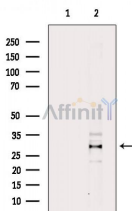
A synthesized peptide derived from human ATF1 around the phosphorylation site of Ser63.

Uniprot:

P18846

Description:

ATF-1 a transcription factor that is a member of the leucine zipper family. Forms a homodimer or heterodimer with c-Jun and stimulates CRE-dependent transcription. Binds the Tax-responsive element (TRE) of HTLV-I. Activated downstream of IL-1. c-Src and TRAF6 are mediators of IL-1-induced AP-1 activation.



Western blot analysis of extracts from HeLa cells (serum starvation treatment), using Phospho-ATF1 (Ser63) Ab. The lane on the left was treated with blocking peptide.

**IMPORTANT:** For western blot, incubate membrane with diluted primary Ab in 5% w/v milk, 1X TBS, 0.1% Tween@20 at 4°C with gentle shaking, overnight.

For Research Use Only. Not for use in diagnostic and therapeutic procedures. Not for resale without express authorization.