

Phospho-INPPL1 (Tyr886) Ab

[Images\(4\)](#)

| | | |
|---------------|-----------------|-----------------------|
| Cat.#: AF7111 | Concn.: ~1mg/ml | Mol.Wt.: 139kDa |
| Size: | Source: Rabbit | Clonality: Polyclonal |

Application: WB 1:500-1:2000, IHC 1:50-1:200
 *The optimal dilutions should be determined by the end user.

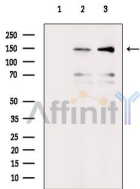
Reactivity: Human,Mouse,Rat

Storage: Rabbit IgG in phosphate buffered saline , pH 7.4, 150mM NaCl, 0.02% sodium azide and 50% glycerol. Store at -20 °C. Stable for 12 months from date of receipt.

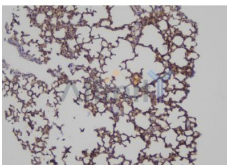
Purification: The Ab is from purified rabbit serum by affinity purification via sequential chromatography on phospho-peptide and non-phospho-peptide affinity columns.

Immunogen: A synthesized peptide derived from human INPPL1 around the phosphorylation site of Tyr886.

Uniprot: O15357



Western blot analysis of extracts from various samples, using Phospho-INPPL1 (Tyr886) Ab.
 Lane 1: Mc-3t3-e1 cells(h2o2 treatment), blocked with antigen-specific peptides.
 Lane 2: Mc-3t3-e1 cells(h2o2 treatment).
 Lane 3: Raw264.7 cells.



AF7111 at 1/100 staining mouse lung tissue sections by IHC-P. The tissue was formaldehyde fixed and a heat mediated antigen retrieval step in citrate buffer was performed. The tissue was then blocked and incubated with the Ab for 1.5 hours at 22°C. An HRP conjugated goat anti-rabbit Ab was used as the secondary Ab.

IMPORTANT: For western blot, incubate membrane with diluted primary Ab in 5% w/v milk , 1X TBS, 0.1% Tween@20 at 4°C with gentle shaking, overnight.

For Research Use Only. Not for use in diagnostic and therapeutic procedures. Not for resale without express authorization.