

## Phospho-MYPT1 (Ser509) Ab

[Images\(2\)](#)Cat.#: AF7105  
Size:Concn.: ~1mg/ml  
Source: RabbitMol.Wt.: 115kDa  
Clonality: Polyclonal

Application:

WB 1:500-1:2000  
\*The optimal dilutions should be determined by the end user.

Reactivity:

Human, Mouse, Rat

Storage:

Rabbit IgG in phosphate buffered saline, pH 7.4, 150mM NaCl, 0.02% sodium azide and 50% glycerol. Store at -20 °C. Stable for 12 months from date of receipt.

Purification:

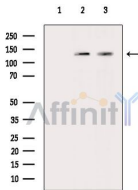
The Ab is from purified rabbit serum by affinity purification via sequential chromatography on phospho-peptide and non-phospho-peptide affinity columns.

Immunogen:

A synthesized peptide derived from human MYPT1 around the phosphorylation site of Ser509.

Uniprot:

O14974



Western blot analysis of extracts from various samples, using Phospho-MYPT1 (Ser509) Ab.

Lane 1: Mc-3t3-e1 cells (h2o2 treatment), blocked with antigen-specific peptides.

Lane 2: Mc-3t3-e1 cells (h2o2 treatment).

Lane 3: Raw264.7 cells.

**IMPORTANT:** For western blot, incubate membrane with diluted primary Ab in 5% w/v milk, 1X TBS, 0.1% Tween@20 at 4°C with gentle shaking, overnight.

For Research Use Only. Not for use in diagnostic and therapeutic procedures. Not for resale without express authorization.