

## Phospho-JunD (Ser255) Ab

[Images\(20\)](#)

Cat.#: AF3200                      Concn.: ~1mg/ml                      Mol.Wt.: 38kDa  
Size:                                      Source: Rabbit                              Clonality: Polyclonal

Application:                      WB 1:500-1:2000, IHC 1:50-1:200, IP, IF/ICC 1:100-1:500  
\*The optimal dilutions should be determined by the end user.

Reactivity:                      Human,Mouse,Rat

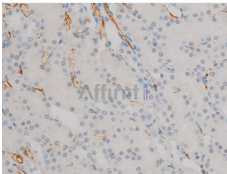
Storage:                              Rabbit IgG in phosphate buffered saline , pH 7.4, 150mM NaCl, 0.02% sodium azide and 50% glycerol. Store at -20 °C. Stable for 12 months from date of receipt.

Purification:                      The Ab is from purified rabbit serum by affinity purification via sequential chromatography on phospho-peptide and non-phospho-peptide affinity columns.

Immunogen:                      A synthesized peptide derived from human JunD around the phosphorylation site of Ser255.

Uniprot:                              P17535

Description:                      JunD Transcription factor binding AP-1 sites. Binds DNA as a dimer. Interacts with MEN1; this interaction represses transcriptional activation. Belongs to the bZIP family. Jun subfamily.



AF3200 at 1/200 staining Rat kidney tissue sections by IHC-P. The tissue was formaldehyde fixed and a heat mediated antigen retrieval step in citrate buffer was performed. The tissue was then blocked and incubated with the Ab for 1.5 hours at 22°C. An HRP conjugated goat anti-rabbit Ab was used as the secondary Ab.

**IMPORTANT:** For western blot, incubate membrane with diluted primary Ab in 5% w/v milk , 1X TBS, 0.1% Tween@20 at 4°C with gentle shaking, overnight.

For Research Use Only. Not for use in diagnostic and therapeutic procedures. Not for resale without express authorization.