

## Phospho-EZH2 (Thr369) Ab

[Images\(2\)](#)

Cat.#: AF8605                      Concn.: ~1mg/ml                      Mol.Wt.: 85kD, 100kD  
Size:                                      Source: Rabbit                          Clonality: Polyclonal

Application:                          WB 1:1000-3000  
\*The optimal dilutions should be determined by the end user.

Reactivity:                            Human,Rat

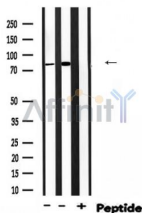
Storage:                                Rabbit IgG in phosphate buffered saline , pH 7.4, 150mM NaCl, 0.02% sodium azide and 50% glycerol. Store at -20 °C. Stable for 12 months from date of receipt.

Purification:                          The Ab is from purified rabbit serum by affinity purification via sequential chromatography on phospho-peptide and non-phospho-peptide affinity columns.

Immunogen:                           A synthesized peptide derived from human EZH2 around the phosphorylation site of T369.

Uniprot:                                Q15910

Description:                           Polycomb group (PcG) protein. Catalytic subunit of the PRC2/EED-EZH2 complex, which methylates 'Lys-9' (H3K9me) and 'Lys-27' (H3K27me) of histone H3, leading to transcriptional repression of the affected target gene. Able to mono-, di- and trimethylate 'Lys-27' of histone H3 to form H3K27me1, H3K27me2 and H3K27me3, respectively. Displays a preference for substrates with less methylation, loses activity when progressively more methyl groups are incorporated into H3K27, H3K27me0 > H3K27me1 > H3K27me2 (PubMed:22323599). Compared to EZH1-containing complexes, it is more abundant in embryonic stem cells and plays a major role in forming H3K27me3, which is required for embryonic stem cell identity and proper differentiation.



Western blot analysis of extracts from various samples, using Phospho-EZH2(Thr369) Ab .

Lane 1: Rat muscle lysates;

Lane 2: Rat brain lysates;

Lane 3: Rat brain lysates treated with blocking peptide;

**IMPORTANT:** For western blot, incubate membrane with diluted primary Ab in 5% w/v milk , 1X TBS, 0.1% Tween@20 at 4°C with gentle shaking, overnight.



**Affinity Biosciences**

website: [www.affbiotech.com](http://www.affbiotech.com)

order: [order@affbiotech.com](mailto:order@affbiotech.com)

---

For Research Use Only. Not for use in diagnostic and therapeutic procedures. Not for resale without express authorization.