

## POLR3B Ab

[Images\(2\)](#)

Cat.#: AF9165                      Concn.: ~1mg/ml                      Mol.Wt.: 128kDa  
Size:                                  Source: Rabbit                        Clonality: Polyclonal

Application:                      WB 1:1000, IF/ICC 1:100-1:500

\*The optimal dilutions should be determined by the end user.

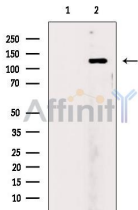
Reactivity:                      Human,Rat

Storage:                        Rabbit IgG in phosphate buffered saline , pH 7.4, 150mM NaCl, 0.02% sodium azide and 50% glycerol. Store at -20 °C. Stable for 12 months from date of receipt.

Purification:                    The antiserum was purified by peptide affinity chromatography using SulfoLink™ Coupling Resin (Thermo Fisher Scientific).

Immunogen:                    A synthesized peptide derived from human POLR3B, corresponding to a region within C-terminal amino acids.

Uniprot:                        Q9NW08



Western blot analysis of extracts from Rat brain, using POLR3B Ab. The lane on the left was treated with blocking peptide.

**IMPORTANT:** For western blot, incubate membrane with diluted primary Ab in 5% w/v milk , 1X TBS, 0.1% Tween@20 at 4°C with gentle shaking, overnight.

For Research Use Only. Not for use in diagnostic and therapeutic procedures. Not for resale without express authorization.