

Olfactory receptor 2C3 Ab

[Images\(2\)](#)

Cat.#: AF9139	Concn.: ~1mg/ml	Mol.Wt.: 36kDa
Size:	Source: Rabbit	Clonality: Polyclonal

Application: WB 1:1000, IHC 1:50-1:200, IF/ICC 1:100-1:500
*The optimal dilutions should be determined by the end user.

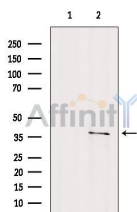
Reactivity: Human, Mouse, Rat

Storage: Rabbit IgG in phosphate buffered saline, pH 7.4, 150mM NaCl, 0.02% sodium azide and 50% glycerol. Store at -20 °C. Stable for 12 months from date of receipt.

Purification: The antiserum was purified by peptide affinity chromatography using SulfoLink™ Coupling Resin (Thermo Fisher Scientific).

Immunogen: A synthesized peptide derived from human Olfactory receptor 2C3, corresponding to a region within the internal amino acids.

Uniprot: Q8N628



Western blot analysis of extracts from Rat brain, using Olfactory receptor 2C3 Ab. The lane on the left was treated with blocking peptide.

IMPORTANT: For western blot, incubate membrane with diluted primary Ab in 5% w/v milk, 1X TBS, 0.1% Tween@20 at 4°C with gentle shaking, overnight.

For Research Use Only. Not for use in diagnostic and therapeutic procedures. Not for resale without express authorization.