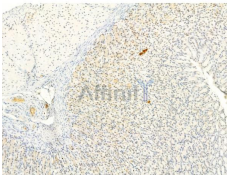


MDM2 Ab

[References\(4\)](#) [Images\(12\)](#)

Cat.#: AF0208	Concn.: ~1mg/ml	Mol.Wt.: 45~55kD,70~95kD
Size:	Source: Rabbit	Clonality: Polyclonal
Application:	WB 1:500-1:3000, IHC 1:50-1:200, IF/ICC: 1:100-1:500 *The optimal dilutions should be determined by the end user.	
Reactivity:	Human,Mouse,Rat,Monkey	
Storage:	Rabbit IgG in phosphate buffered saline , pH 7.4, 150mM NaCl, 0.02% sodium azide and 50% glycerol. Store at -20 °C. Stable for 12 months from date of receipt.	
Purification:	The antiserum was purified by peptide affinity chromatography using SulfoLink™ Coupling Resin (Thermo Fisher Scientific).	
Immunogen:	A synthesized peptide derived from human MDM2, corresponding to a region within the internal amino acids.	
Uniprot:	Q00987	
Description:	MDM2 a ubiquitin ligase for p53, plays a central role in regulation of the stability of p53 via Akt-mediated MDM2 phosphorylation. Phosphorylation of MDM2 increases its interaction with p300, providing a platform to allow the assembly of the protein complex necessary for MDM2-mediated ubiquitination and degradation of p53. Phosphorylation of MDM2 also blocks its binding to p19ARF, increasing the degradation of p53. Facilitates the nuclear export of p53 and targets it for proteasome-mediated proteolysis. Eight alternatively spliced isoforms have been reported.	



AF0208 at 1/100 staining Rat stomach tissue by IHC-P. The sample was formaldehyde fixed and a heat mediated antigen retrieval step in citrate buffer was performed. The sample was then blocked and incubated with the primary Ab at 4°C overnight. An HRP conjugated anti-Rabbit Ab was used as the secondary Ab.

IMPORTANT: For western blot, incubate membrane with diluted primary Ab in 5% w/v milk , 1X TBS, 0.1% Tween@20 at 4°C with gentle shaking, overnight.

For Research Use Only. Not for use in diagnostic and therapeutic procedures. Not for resale without express authorization.