

## Phospho-CDK1/CDC2 (Tyr15) Ab

[References\(1\)](#) [Images\(3\)](#)

Cat.#: AF3108                      Concn.: ~1mg/ml                      Mol.Wt.: 34kDa,30kDa  
Size:                                      Source: Rabbit                              Clonality: Polyclonal

Application:                      WB 1:500-1:2000, IF/ICC 1:100-1:500  
\*The optimal dilutions should be determined by the end user.

Reactivity:                      Human,Mouse,Rat

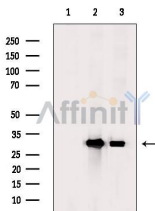
Storage:                              Rabbit IgG in phosphate buffered saline , pH 7.4, 150mM NaCl, 0.02% sodium azide and 50% glycerol. Store at -20 °C. Stable for 12 months from date of receipt.

Purification:                      The Ab is from purified rabbit serum by affinity purification via sequential chromatography on phospho-peptide and non-phospho-peptide affinity columns.

Immunogen:                      A synthesized peptide derived from human CDK1/CDC2 around the phosphorylation site of Tyr15.

Uniprot:                              P06493

Description:                      The protein encoded by this gene is a member of the Ser/Thr protein kinase family. This protein is a catalytic subunit of the highly conserved protein kinase complex known as M-phase promoting factor (MPF), which is essential for G1/S and G2/M phase transitions of eukaryotic cell cycle. Mitotic cyclins stably associate with this protein and function as regulatory subunits.



Western blot analysis of extracts from various samples, using Phospho-CDC2 (Tyr15) Ab.

Lane 1: Heat-shock treated MDA-MB-231 cells, blocked with antigen-specific peptides,

Lane 2: Heat-shock treated MDA-MB-231 cells,

Lane 3: Heat-shock treated A2780 cells.

Observed bands: 30 kDa.

**IMPORTANT:** For western blot, incubate membrane with diluted primary Ab in 5% w/v milk , 1X TBS, 0.1% Tween@20 at 4°C with gentle shaking, overnight.

For Research Use Only. Not for use in diagnostic and therapeutic procedures. Not for resale without express authorization.