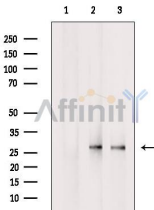


CLDN18 Ab

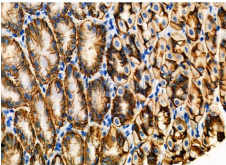
[Images\(4\)](#)

| | | |
|---------------|-----------------|-----------------------|
| Cat.#: DF9392 | Concn.: ~1mg/ml | Mol.Wt.: 28 kDa |
| Size: | Source: Rabbit | Clonality: Polyclonal |

| | |
|---------------|--|
| Application: | WB 1:1000-3000, IHC 1:50-1:200 *The optimal dilutions should be determined by the end user. |
| Reactivity: | Human,Mouse,Rat,Monkey |
| Storage: | Rabbit IgG in phosphate buffered saline , pH 7.4, 150mM NaCl, 0.02% sodium azide and 50% glycerol. Store at -20 °C. Stable for 12 months from date of receipt. |
| Purification: | The antiserum was purified by peptide affinity chromatography using SulfoLink™ Coupling Resin (Thermo Fisher Scientific). |
| Immunogen: | A synthesized peptide derived from human CLDN18, corresponding to a region within C-terminal amino acids. |
| Uniprot: | P56856 |



Western blot analysis of extracts from various samples, using CLDN18 Ab.
Lane 1: COS-7, treated with blocking peptide;
Lane 2: COS-7;
Lane 3: 3T3.



DF9392 at 1/100 staining Mouse stomach tissue by IHC-P. The sample was formaldehyde fixed and a heat mediated antigen retrieval step in citrate buffer was performed. The sample was then blocked and incubated with the primary Ab at 4°C overnight. An HRP conjugated anti-Rabbit Ab was used as the secondary Ab.

IMPORTANT: For western blot, incubate membrane with diluted primary Ab in 5% w/v milk , 1X TBS, 0.1% Tween@20 at 4°C with gentle shaking, overnight.

For Research Use Only. Not for use in diagnostic and therapeutic procedures. Not for resale without express authorization.