

## Cytokeratin 5 Ab

[Images\(4\)](#)

Cat.#: AF0194                                  Concn.: ~1mg/ml                                  Mol.Wt.: 62kDa  
Size:    Source: Rabbit    Clonality: Polyclonal

Application:                                  WB 1:500-1:3000, IHC 1:50-1:200, IF/ICC 1:100-1:500  
\*The optimal dilutions should be determined by the end user.

Reactivity:    Human,Mouse,Rat

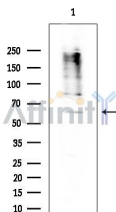
Storage:    Rabbit IgG in phosphate buffered saline , pH 7.4, 150mM NaCl, 0.02% sodium azide and 50% glycerol. Store at -20 °C. Stable for 12 months from date of receipt.

Purification:    The antiserum was purified by peptide affinity chromatography using SulfoLink™ Coupling Resin (Thermo Fisher Scientific).

Immunogen:    A synthesized peptide derived from human Cytokeratin 5, corresponding to a region within C-terminal amino acids.

Uniprot:    P13647

Description:    K5 Belongs to the intermediate filament family. Heterotetramer of two type I and two type II keratins. Keratin-5 associates with keratin-14. Interacts with TCHP.



Western blot analysis of extracts from Mouse testis, using Cytokeratin 5 Ab at 1/1000 dilution.  
Observed bands:65kD.

**IMPORTANT:** For western blot, incubate membrane with diluted primary Ab in 5% w/v milk , 1X TBS, 0.1% Tween@20 at 4°C with gentle shaking, overnight.

For Research Use Only. Not for use in diagnostic and therapeutic procedures. Not for resale without express authorization.