

Phospho-ICAM1 (Tyr512) Ab

[Images\(7\)](#)

Cat.#: AF3088	Concn.: ~1mg/ml	Mol.Wt.: 92kDa, 57 kDa
Size:	Source: Rabbit	Clonality: Polyclonal

Application: WB 1:500-1:2000, IHC 1:50-1:200, IF/ICC 1:100-1:500

*The optimal dilutions should be determined by the end user.

Reactivity: Human, Mouse, Monkey

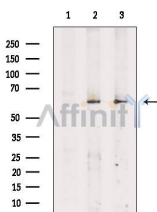
Storage: Rabbit IgG in phosphate buffered saline, pH 7.4, 150mM NaCl, 0.02% sodium azide and 50% glycerol. Store at -20 °C. Stable for 12 months from date of receipt.

Purification: The Ab is from purified rabbit serum by affinity purification via sequential chromatography on phospho-peptide and non-phospho-peptide affinity columns.

Immunogen: A synthesized peptide derived from human ICAM1 around the phosphorylation site of Tyr512.

Uniprot: P05362

Description: ICAM1 a type I membrane protein of the immunoglobulin superfamily. Is a ligand for the leukocyte adhesion LFA-1 protein (Integrin alpha-L/beta-2) and a Rhinovirus receptor. Typically expressed on endothelial cells and cells of the immune system.



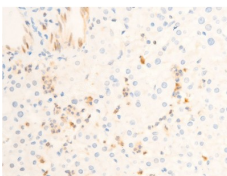
Western blot analysis of extracts from various samples, using Phospho-ICAM-1 (Tyr512) Ab.

Lane 1: VERO cells, treated with blocking peptide;

Lane 2: VERO cells;

Lane 3: A2780 cells.

Observed bands: 57 kDa.



AF3088 at 1/100 staining human liver tissue sections by IHC-P. The tissue was formaldehyde fixed and a heat mediated antigen retrieval step in citrate buffer was performed. The tissue was then blocked and incubated with the Ab for 1.5 hours at 22°C. An HRP conjugated goat anti-rabbit Ab was used as the secondary Ab.

IMPORTANT: For western blot, incubate membrane with diluted primary Ab in 5% w/v milk, 1X TBS, 0.1% Tween@20 at 4°C with gentle shaking,



Affinity Biosciences
website: www.affbiotech.com
order: order@affbiotech.com

overnight.

For Research Use Only. Not for use in diagnostic and therapeutic procedures. Not for resale without express authorization.