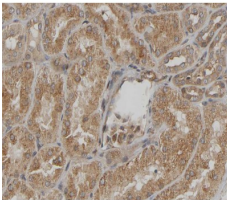


Phospho-HSP27 (Ser15) Ab

[References\(1\)](#) [Images\(3\)](#)

Cat.#: AF3080	Concn.: ~1mg/ml	Mol.Wt.: 27kDa
Size:	Source: Rabbit	Clonality: Polyclonal
Application:	WB 1:500-1:2000, IHC 1:50-1:200, IF/ICC 1:100-1:500 *The optimal dilutions should be determined by the end user.	
Reactivity:	Human,Mouse,Rat	
Storage:	PBS, pH 7.4,50% glycerol. Store at -20 °C. Stable for 12 months from date of receipt.	
Purification:	The Ab is from purified rabbit serum by affinity purification via sequential chromatography on phospho-peptide and non-phospho-peptide affinity columns.	
Immunogen:	A synthesized peptide derived from human HSP27 around the phosphorylation site of Ser15.	
Uniprot:	P04792	
Description:	HSP27 is a small heat shock protein that is regulated both transcriptionally and posttranslationally. Modulates actin polymerization and reorganization.	



AF3080 at 1/200 staining human kidney sections by IHC-P. The tissue was formaldehyde fixed and a heat mediated antigen retrieval step in citrate buffer was performed. The tissue was then blocked and incubated with the Ab for 1.5 hours at 22° C. An HRP conjugated goat anti-rabbit Ab was used as the secondary Ab.

IMPORTANT: For western blot, incubate membrane with diluted primary Ab in 5% w/v milk , 1X TBS, 0.1% Tween@20 at 4°C with gentle shaking, overnight.

For Research Use Only. Not for use in diagnostic and therapeutic procedures. Not for resale without express authorization.