

## CENPC1 Ab

[Images\(2\)](#)

Cat.#: DF9057                                      Concn.: ~1mg/ml                                      Mol.Wt.: 106 kDa  
Size:    Source: Rabbit    Clonality: Polyclonal

Application:                                      WB 1:1000-3000, IHC 1:50-1:200  
  \*The optimal dilutions should be determined by the end user.

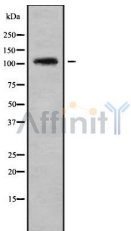
Reactivity:                                        Human

Storage:    Rabbit IgG in phosphate buffered saline , pH 7.4, 150mM NaCl, 0.02% sodium azide and 50% glycerol. Store at -20 °C. Stable for 12 months from date of receipt.

Purification:                                      The antiserum was purified by peptide affinity chromatography using SulfoLink™ Coupling Resin (Thermo Fisher Scientific).

Immunogen:                                        A synthesized peptide derived from human CENPC1, corresponding to a region within C-terminal amino acids.

Uniprot:    Q03188



Western blot analysis of CENPC1 using Jurkat whole cell lysates



DF9057 at 1/100 staining Mouse brain tissue by IHC-P. The sample was formaldehyde fixed and a heat mediated antigen retrieval step in citrate buffer was performed. The sample was then blocked and incubated with the primary Ab at 4°C overnight. An HRP conjugated anti-Rabbit Ab was used as the secondary Ab.

**IMPORTANT:** For western blot, incubate membrane with diluted primary Ab in 5% w/v milk , 1X TBS, 0.1% Tween@20 at 4°C with gentle shaking, overnight.

For Research Use Only. Not for use in diagnostic and therapeutic procedures. Not for resale without express authorization.