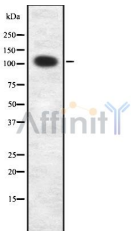


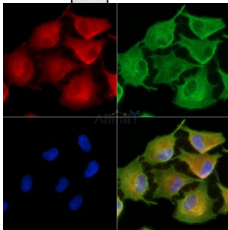
ITGA8 Ab

[Images\(2\)](#)

Cat.#: DF8993	Concn.: ~1mg/ml	Mol.Wt.: 117 kDa
Size:	Source: Rabbit	Clonality: Polyclonal
Application:	IF/ICC 1:100-1:500, WB 1:1000-3000 *The optimal dilutions should be determined by the end user.	
Reactivity:	Human,Mouse	
Storage:	Rabbit IgG in phosphate buffered saline , pH 7.4, 150mM NaCl, 0.02% sodium azide and 50% glycerol. Store at -20 °C. Stable for 12 months from date of receipt.	
Purification:	The antiserum was purified by peptide affinity chromatography using SulfoLink™ Coupling Resin (Thermo Fisher Scientific).	
Immunogen:	A synthesized peptide derived from human ITGA8, corresponding to a region within C-terminal amino acids.	
Uniprot:	P53708	



Western blot analysis ITGA8 using LOVO whole cell lysates



DF8993 staining A549 cells by IF/ICC. The samples were fixed with PFA and permeabilized in 0.1% Triton X-100, then blocked in 10% serum for 45 minutes at 25°C. Samples were then incubated with primary Ab(#DF8993) and mouse anti-beta tubulin Ab(#T0023) for 1 hour at 37°C. An AlexaFluor594 conjugated goat anti-rabbit IgG Ab(Red) and an AlexaFluor488 conjugated goat anti-mouse IgG Ab(Green) were used as the secondary Ab.
The nuclear counter stain is DAPI (blue).

IMPORTANT: For western blot, incubate membrane with diluted primary Ab in 5% w/v milk , 1X TBS, 0.1% Tween@20 at 4°C with gentle shaking, overnight.

For Research Use Only. Not for use in diagnostic and therapeutic procedures. Not for resale without express authorization.