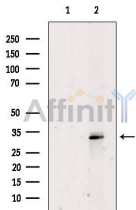


IL28B Ab

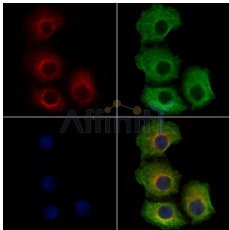
[Images\(3\)](#)

Cat.#: DF8984	Concn.: ~1mg/ml	Mol.Wt.: 22 kDa,30kDa
Size:	Source: Rabbit	Clonality: Polyclonal
Application:	WB 1:1000-3000, IHC 1:50-1:200, IF/ICC 1:100-1:500	
Reactivity:	*The optimal dilutions should be determined by the end user. Human,Mouse,Rat	
Storage:	Rabbit IgG in phosphate buffered saline , pH 7.4, 150mM NaCl, 0.02% sodium azide and 50% glycerol. Store at -20 °C. Stable for 12 months from date of receipt.	
Purification:	The antiserum was purified by peptide affinity chromatography using SulfoLink™ Coupling Resin (Thermo Fisher Scientific).	
Immunogen:	A synthesized peptide derived from human IL28B, corresponding to a region within the internal amino acids.	
Uniprot:	Q8IZI9/Q8IZJ0	



Western blot analysis of extracts from EC304 cells, using IL28B Ab. The lane on the left was treated with blocking peptide.

Observed bands: 30 kDa.



DF8984 staining HeLa cells by IF/ICC. The samples were fixed with PFA and permeabilized in 0.1% Triton X-100, then blocked in 10% serum for 45 minutes at 25°C. Samples were then incubated with primary Ab(DF8984 1:200) and mouse anti-beta tubulin Ab(T0023 1:200) for 1 hour at 37°C. An AlexaFluor594 conjugated goat anti-rabbit IgG(H+L) Ab(Red) and an AlexaFluor488 conjugated goat anti-mouse IgG(H+L) Ab(Green) were used as the secondary Ab. The nuclear counter stain is DAPI(blue).

IMPORTANT: For western blot, incubate membrane with diluted primary Ab in 5% w/v milk , 1X TBS, 0.1% Tween@20 at 4°C with gentle shaking, overnight.

For Research Use Only. Not for use in diagnostic and therapeutic procedures. Not for resale without express authorization.