

## Phospho-MCSF Receptor (Tyr809) Ab

[Images\(1\)](#)

Cat.#: AF3116                      Concn.: ~1mg/ml                      Mol.Wt.: 110~200kDa  
Size:                                      Source: Rabbit                              Clonality: Polyclonal

**Application:** WB 1:500-1:2000, IF/ICC 1:100-1:500  
\*The optimal dilutions should be determined by the end user.

**Reactivity:** Human,Mouse,Rat

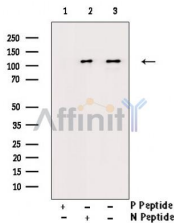
**Storage:** Rabbit IgG in phosphate buffered saline , pH 7.4, 150mM NaCl, 0.02% sodium azide and 50% glycerol. Store at -20 °C. Stable for 12 months from date of receipt.

**Purification:** The Ab is from purified rabbit serum by affinity purification via sequential chromatography on phospho-peptide and non-phospho-peptide affinity columns.

**Immunogen:** A synthesized peptide derived from human MCSF Receptor around the phosphorylation site of Tyr809.

**Uniprot:** P07333

**Description:** This protein tyrosine kinase transmembrane receptor is the receptor for colony stimulating factor 1, a cytokine which controls the production, differentiation, and function of macrophages. This receptor mediates most if not all of the biological effects of this cytokine.



Western blot analysis of Phospho-M-CSF Receptor (Tyr809) Ab expression in LPS treated 293 cells lysates. The lane on the right was treated with the antigen-specific peptide.

**IMPORTANT:** For western blot, incubate membrane with diluted primary Ab in 5% w/v milk , 1X TBS, 0.1% Tween@20 at 4°C with gentle shaking, overnight.

For Research Use Only. Not for use in diagnostic and therapeutic procedures. Not for resale without express authorization.