

## IP6K1 Ab

[Images\(2\)](#)

Cat.#: DF8856                                  Concn.: ~1mg/ml                                  Mol.Wt.: 55 kDa  
Size:    Source: Rabbit    Clonality: Polyclonal

Application:    IHC 1:50-1:200, WB 1:1000-3000  
\*The optimal dilutions should be determined by the end user.

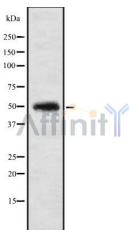
Reactivity:    Human,Mouse,Rat

Storage:    Rabbit IgG in phosphate buffered saline , pH 7.4, 150mM NaCl, 0.02% sodium azide and 50% glycerol. Store at -20 °C. Stable for 12 months from date of receipt.

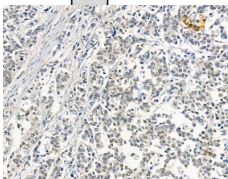
Purification:    The antiserum was purified by peptide affinity chromatography using SulfoLink™ Coupling Resin (Thermo Fisher Scientific).

Immunogen:    A synthesized peptide derived from human IP6K1, corresponding to a region within the internal amino acids.

Uniprot:    Q92551



Western blot analysis IP6K1 using K562 whole cell lysates



DF8856 at 1/100 staining human colorectal cancer by IHC-P. The sample was formaldehyde fixed and a heat mediated antigen retrieval step in citrate buffer was performed. The sample was then blocked and incubated with the primary Ab at 4°C overnight. An HRP conjugated anti-rabbit Ab was used as the secondary Ab.

**IMPORTANT:** For western blot, incubate membrane with diluted primary Ab in 5% w/v milk , 1X TBS, 0.1% Tween@20 at 4°C with gentle shaking, overnight.

For Research Use Only. Not for use in diagnostic and therapeutic procedures. Not for resale without express authorization.