

## WIT1 Ab

[Images\(3\)](#)

Cat.#: DF8816                                      Concn.: ~1mg/ml                                      Mol.Wt.: 10 kDa  
Size:                                                      Source: Rabbit                                              Clonality: Polyclonal

Application:                                      WB 1:1000-3000, IHC 1:50-1:200  
\*The optimal dilutions should be determined by the end user.

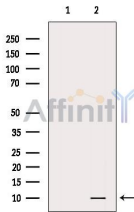
Reactivity:                                      Human,Mouse,Rat

Storage:                                              Rabbit IgG in phosphate buffered saline , pH 7.4, 150mM NaCl, 0.02% sodium azide and 50% glycerol. Store at -20 °C. Stable for 12 months from date of receipt.

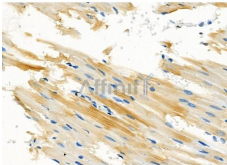
Purification:                                      The antiserum was purified by peptide affinity chromatography using SulfoLink™ Coupling Resin (Thermo Fisher Scientific).

Immunogen:                                      A synthesized peptide derived from human WIT1, corresponding to a region within the internal amino acids.

Uniprot:                                              Q06250



Western blot analysis of extracts from Hybridoma cells, using WIT1 Ab. The lane on the left was treated with blocking peptide.



DF8816 at 1/100 staining Rat heart tissue by IHC-P. The sample was formaldehyde fixed and a heat mediated antigen retrieval step in citrate buffer was performed. The sample was then blocked and incubated with the primary Ab at 4°C overnight. An HRP conjugated anti-Rabbit Ab was used as the secondary Ab.

**IMPORTANT:** For western blot, incubate membrane with diluted primary Ab in 5% w/v milk , 1X TBS, 0.1% Tween@20 at 4°C with gentle shaking, overnight.

For Research Use Only. Not for use in diagnostic and therapeutic procedures. Not for resale without express authorization.