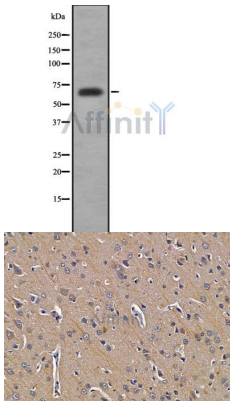


p63 MAPK Ab

[Images\(2\)](#)

Cat.#: DF8796	Concn.: ~1mg/ml	Mol.Wt.: 66 kDa
Size:	Source: Rabbit	Clonality: Polyclonal

Application:	IHC 1:50-1:200, WB 1:1000-3000 *The optimal dilutions should be determined by the end user.
Reactivity:	Human,Mouse
Storage:	Rabbit IgG in phosphate buffered saline , pH 7.4, 150mM NaCl, 0.02% sodium azide and 50% glycerol. Store at -20 °C. Stable for 12 months from date of receipt.
Purification:	The antiserum was purified by peptide affinity chromatography using SulfoLink™ Coupling Resin (Thermo Fisher Scientific).
Immunogen:	A synthesized peptide derived from human p63 MAPK, corresponding to a region within the internal amino acids.
Uniprot:	P31152



Western blot analysis of p63 MAPK using K562 whole cell lysates

DF8796 at 1/100 staining rat brain tissue by IHC-P. The sample was formaldehyde fixed and a heat mediated antigen retrieval step in citrate buffer was performed. The sample was then blocked and incubated with the primary Ab at 4°C overnight. An HRP conjugated anti-rabbit Ab was used as the secondary Ab.

IMPORTANT: For western blot, incubate membrane with diluted primary Ab in 5% w/v milk , 1X TBS, 0.1% Tween@20 at 4°C with gentle shaking, overnight.

For Research Use Only. Not for use in diagnostic and therapeutic procedures. Not for resale without express authorization.