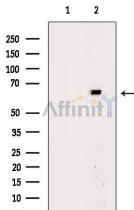


## TBX15/18 Ab

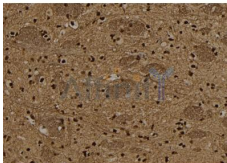
[Images\(3\)](#)

|               |                 |                       |
|---------------|-----------------|-----------------------|
| Cat.#: DF8727 | Concn.: ~1mg/ml | Mol.Wt.: 65 kDa       |
| Size:         | Source: Rabbit  | Clonality: Polyclonal |

|               |  |
|---------------|--|
| Application:  | WB 1:1000-3000, IHC 1:50-1:200, IF/ICC 1:100-1:500<br>*The optimal dilutions should be determined by the end user.   |
| Reactivity:   | Human,Mouse,Rat  |
| Storage:      | Rabbit IgG in phosphate buffered saline , pH 7.4, 150mM NaCl, 0.02% sodium azide and 50% glycerol. Store at -20 °C. Stable for 12 months from date of receipt. |
| Purification: | The antiserum was purified by peptide affinity chromatography using SulfoLink™ Coupling Resin (Thermo Fisher Scientific).                                      |
| Immunogen:    | A synthesized peptide derived from human TBX15/18, corresponding to a region within the internal amino acids.  |
| Uniprot:      | O95935/Q96SF7  |



Western blot analysis of extracts from Mouse brain, using TBX15/18 Ab. The lane on the left was treated with blocking peptide.



DF8727 at 1/100 staining Rat brain tissue by IHC-P. The sample was formaldehyde fixed and a heat mediated antigen retrieval step in citrate buffer was performed. The sample was then blocked and incubated with the Ab for 1.5 hours at 22°C. An HRP conjugated goat anti-rabbit Ab was used as the secondary Ab.

**IMPORTANT:** For western blot, incubate membrane with diluted primary Ab in 5% w/v milk , 1X TBS, 0.1% Tween@20 at 4°C with gentle shaking, overnight.

For Research Use Only. Not for use in diagnostic and therapeutic procedures. Not for resale without express authorization.