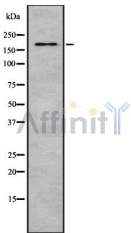


## LAMB2 Ab

[Images\(1\)](#)

|                        |  |   |
|------------------------|--|---|
| Cat.#: DF8673<br>Size: | Concn.: ~1mg/ml<br>Source: Rabbit  | Mol.Wt.: 195 kDa<br>Clonality: Polyclonal |
| Application:           | WB 1:1000-3000, IF/ICC 1:100-1:500<br>*The optimal dilutions should be determined by the end user.   |   |
| Reactivity:            | Human,Mouse,Rat  |   |
| Storage:               | Rabbit IgG in phosphate buffered saline , pH 7.4, 150mM NaCl, 0.02% sodium azide and 50% glycerol. Store at -20 °C. Stable for 12 months from date of receipt. |   |
| Purification:          | The antiserum was purified by peptide affinity chromatography using SulfoLink™ Coupling Resin (Thermo Fisher Scientific).                                      |   |
| Immunogen:             | A synthesized peptide derived from human LAMB2, corresponding to a region within N-terminal amino acids.   |   |
| Uniprot:               | P55268   |   |



Western blot analysis of LAMB2 using HeLa whole cell lysates

**IMPORTANT:** For western blot, incubate membrane with diluted primary Ab in 5% w/v milk , 1X TBS, 0.1% Tween@20 at 4°C with gentle shaking, overnight.

For Research Use Only. Not for use in diagnostic and therapeutic procedures. Not for resale without express authorization.