

APC8 Ab

[Images\(3\)](#)

| | | |
|---------------|-----------------|-----------------------|
| Cat.#: DF8637 | Concn.: ~1mg/ml | Mol.Wt.: 68 kDa |
| Size: | Source: Rabbit | Clonality: Polyclonal |

Application: WB 1:1000-3000, IF/ICC 1:100-1:500
 *The optimal dilutions should be determined by the end user.

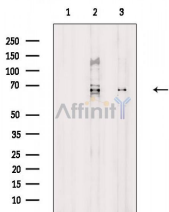
Reactivity: Human,Mouse

Storage: Rabbit IgG in phosphate buffered saline , pH 7.4, 150mM NaCl, 0.02% sodium azide and 50% glycerol. Store at -20 °C. Stable for 12 months from date of receipt.

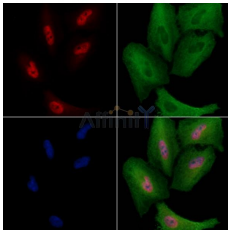
Purification: The antiserum was purified by peptide affinity chromatography using SulfoLink™ Coupling Resin (Thermo Fisher Scientific).

Immunogen: A synthesized peptide derived from human APC8, corresponding to a region within the internal amino acids.

Uniprot: Q9UJX2



Western blot analysis of extracts from various samples, using APC8 Ab.
 Lane 1: HepG2 cells(serum starvation treatment), blocked with antigen-specific peptides,
 Lane 2: HepG2 cells(serum starvation treatment),
 Lane 3: RAW264.7 cells(serum starvation treatment).



DF8637 staining A549 cells by IF/ICC. The samples were fixed with PFA and permeabilized in 0.1% Triton X-100, then blocked in 10% serum for 45 minutes at 25°C. Samples were then incubated with primary Ab(DF8637) and mouse anti-beta tubulin Ab(T0023) for 1 hour at 37°C. An AlexaFluor594 conjugated goat anti-rabbit IgG(H+L) Ab(Red) and an AlexaFluor488 conjugated goat anti-mouse IgG(H+L) Ab(Green) were used as the secondary Ab.
 The nuclear counter stain is DAPI (blue).

IMPORTANT: For western blot, incubate membrane with diluted primary Ab in 5% w/v milk , 1X TBS, 0.1% Tween@20 at 4°C with gentle shaking, overnight.

For Research Use Only. Not for use in diagnostic and therapeutic procedures. Not for resale without express authorization.