

SP-B Ab

[References\(1\)](#) [Images\(3\)](#)

Cat.#: DF8615 Concn.: ~1mg/ml Mol.Wt.: 42 kDa
Size: Source: Rabbit Clonality: Polyclonal

Application: IHC 1:50-1:200, WB 1:1000-3000
 *The optimal dilutions should be determined by the end user.

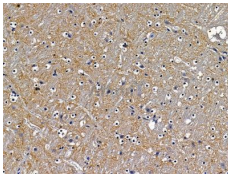
Reactivity: Human

Storage: Rabbit IgG in phosphate buffered saline , pH 7.4, 150mM NaCl, 0.02% sodium azide and 50% glycerol. Store at -20 °C. Stable for 12 months from date of receipt.

Purification: The antiserum was purified by peptide affinity chromatography using SulfoLink™ Coupling Resin (Thermo Fisher Scientific).

Immunogen: A synthesized peptide derived from human SP-B, corresponding to a region within the internal amino acids.

Uniprot: P07988



DF8615 at 1/100 staining mouse brain tissue by IHC-P. The sample was formaldehyde fixed and a heat mediated antigen retrieval step in citrate buffer was performed. The sample was then blocked and incubated with the primary Ab at 4°C overnight. An HRP conjugated anti-rabbit Ab was used as the secondary Ab.

IMPORTANT: For western blot, incubate membrane with diluted primary Ab in 5% w/v milk , 1X TBS, 0.1% Tween@20 at 4°C with gentle shaking, overnight.

For Research Use Only. Not for use in diagnostic and therapeutic procedures. Not for resale without express authorization.