

## Phospho-IRE1 (Ser724) Ab

[References\(5\)](#) [Images\(5\)](#)

Cat.#: DF8322  
Size:

Concn.: ~1mg/ml  
Source: Rabbit

Mol.Wt.: 110 kDa  
Clonality: Polyclonal

Application:

WB 1:1000-3000  
\*The optimal dilutions should be determined by the end user.

Reactivity:

Human,Mouse,Rat

Storage:

Rabbit IgG in phosphate buffered saline , pH 7.4, 150mM NaCl, 0.02% sodium azide and 50% glycerol. Store at -20 °C. Stable for 12 months from date of receipt.

Purification:

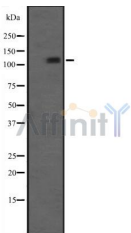
The Ab is from purified rabbit serum by affinity purification via sequential chromatography on phospho-peptide and non-phospho-peptide affinity columns.

Immunogen:

Synthetic peptide corresponding to Human IRE1 around the phosphorylation site of Ser724.

Uniprot:

O75460



Western blot analysis IRE1 (phospho S724) using HT29 whole cell lysates

**IMPORTANT:** For western blot, incubate membrane with diluted primary Ab in 5% w/v milk , 1X TBS, 0.1% Tween@20 at 4°C with gentle shaking, overnight.

For Research Use Only. Not for use in diagnostic and therapeutic procedures. Not for resale without express authorization.