

## SOCS2 Ab

[Images\(3\)](#)

Cat.#: DF8133                                      Concn.: ~1mg/ml                                      Mol.Wt.: 23 kDa  
Size:    Source: Rabbit    Clonality: Polyclonal

Application:                                      WB 1:1000-3000, IF/ICC 1:200-1:500  
\*The optimal dilutions should be determined by the end user.

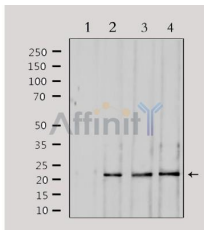
Reactivity:                                      Human,Mouse,Rat,Monkey

Storage:    Rabbit IgG in phosphate buffered saline , pH 7.4, 150mM NaCl, 0.02% sodium azide and 50% glycerol. Store at -20 °C. Stable for 12 months from date of receipt.

Purification:                                      The antiserum was purified by peptide affinity chromatography using SulfoLink™ Coupling Resin (Thermo Fisher Scientific).

Immunogen:                                      A synthesized peptide derived from human SOCS2, corresponding to a region within C-terminal amino acids.

Uniprot:    O14508



Western blot analysis of extracts from various samples, using SOCS2 Ab.  
Lane 1: 293 treated with blocking peptide; Lane 2: 293; Lane 3: mouse brain;  
Lane 4: hela;

**IMPORTANT:** For western blot, incubate membrane with diluted primary Ab in 5% w/v milk , 1X TBS, 0.1% Tween@20 at 4°C with gentle shaking, overnight.

For Research Use Only. Not for use in diagnostic and therapeutic procedures. Not for resale without express authorization.