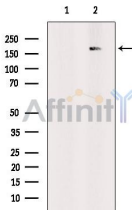


RSF1 Ab

[Images\(2\)](#)

| | | |
|---------------|-----------------|-----------------------|
| Cat.#: DF8109 | Concn.: ~1mg/ml | Mol.Wt.: 164 kDa |
| Size: | Source: Rabbit | Clonality: Polyclonal |

| | |
|---------------|--|
| Application: | WB 1:1000-3000 *The optimal dilutions should be determined by the end user. |
| Reactivity: | Human,Mouse,Rat |
| Storage: | Rabbit IgG in phosphate buffered saline , pH 7.4, 150mM NaCl, 0.02% sodium azide and 50% glycerol. Store at -20 °C. Stable for 12 months from date of receipt. |
| Purification: | The antiserum was purified by peptide affinity chromatography using SulfoLink™ Coupling Resin (Thermo Fisher Scientific). |
| Immunogen: | A synthesized peptide derived from human RSF1, corresponding to a region within the internal amino acids. |
| Uniprot: | Q96T23 |



Western blot analysis of extracts from Pc12, using RSF1 Ab. The lane on the left was treated with blocking peptide.

IMPORTANT: For western blot, incubate membrane with diluted primary Ab in 5% w/v milk , 1X TBS, 0.1% Tween@20 at 4°C with gentle shaking, overnight.

For Research Use Only. Not for use in diagnostic and therapeutic procedures. Not for resale without express authorization.