

## UBE2L3 Ab

[Images\(2\)](#)

Cat.#: DF8031                              Concn.: ~1mg/ml                              Mol.Wt.: 18 kDa  
Size:    Source: Rabbit                                 Clonality: Polyclonal

Application:                                WB 1:1000-3000  
  \*The optimal dilutions should be determined by the end user.

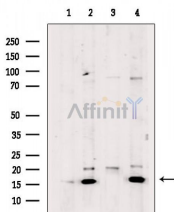
Reactivity:                                 Human, Mouse

Storage:                                    Rabbit IgG in phosphate buffered saline , pH 7.4, 150mM NaCl, 0.02% sodium azide and 50% glycerol. Store at -20 °C. Stable for 12 months from date of receipt.

Purification:                               The antiserum was purified by peptide affinity chromatography using SulfoLink™ Coupling Resin (Thermo Fisher Scientific).

Immunogen:                                A synthesized peptide derived from human UBE2L3, corresponding to a region within C-terminal amino acids.

Uniprot:                                    P68036



Western blot analysis of extracts from various samples, using UBE2L3 Ab.  
Lane 1: HepG2 cells, blocked with antigen-specific peptides,  
Lane 2: HepG2 cells,  
Lane 3: A375 cells,  
Lane 4: B16F10 cells.

**IMPORTANT:** For western blot, incubate membrane with diluted primary Ab in 5% w/v milk , 1X TBS, 0.1% Tween@20 at 4°C with gentle shaking, overnight.

For Research Use Only. Not for use in diagnostic and therapeutic procedures. Not for resale without express authorization.