

E2-Tag Ab

[Images\(1\)](#)

Cat.#: T0002 Concn.: ~1mg/ml Mol.Wt.:
 Size: Source: Mouse Clonality: Monoclonal

Application: WB 1:3000-1:10000
 *The optimal dilutions should be determined by the end user.

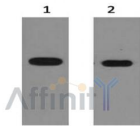
Reactivity: All

Storage: Mouse IgG in phosphate buffered saline , pH 7.4, 150mM NaCl, 0.02% sodium azide and 50% glycerol. Store at -20 °C. Stable for 12 months from date of receipt.

Purification: Affinity-chromatography.

Immunogen: E2-tag peptide GVSSTSSDFRDR conjugated to KLH.

Description: E2-tag peptide GVSSTSSDFRDR conjugated to KLH. E2- Tag antibody can recognize C-terminal, internal, and N-terminal E2-tagged proteins.



2ug E2 fusion protein+ Primary Ab dilution at 1?1:5,000 2?1:10,000

E2 fusion protein

IMPORTANT: For western blot, incubate membrane with diluted primary Ab in 5% w/v milk , 1X TBS, 0.1% Tween@20 at 4°C with gentle shaking, overnight.

For Research Use Only. Not for use in diagnostic and therapeutic procedures. Not for resale without express authorization.