

## NODAL Ab

[References\(1\)](#) [Images\(2\)](#)

Cat.#: DF7791	Concn.: ~1mg/ml	Mol.Wt.: 40 kDa, 30 kDa
Size:	Source: Rabbit	Clonality: Polyclonal

**Application:** WB 1:1000-3000  
\*The optimal dilutions should be determined by the end user.

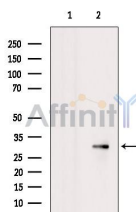
**Reactivity:** Human,Mouse,Rat

**Storage:** Rabbit IgG in phosphate buffered saline , pH 7.4, 150mM NaCl, 0.02% sodium azide and 50% glycerol. Store at -20 °C. Stable for 12 months from date of receipt.

**Purification:** The antiserum was purified by peptide affinity chromatography using SulfoLink™ Coupling Resin (Thermo Fisher Scientific).

**Immunogen:** A synthesized peptide derived from human NODAL, corresponding to a region within the internal amino acids.

**Uniprot:** Q96S42



Western blot analysis of extracts from C6 cells, using NODAL Ab. The lane on the left was treated with blocking peptide.

Observed bands: 30 kDa.

**IMPORTANT:** For western blot, incubate membrane with diluted primary Ab in 5% w/v milk , 1X TBS, 0.1% Tween@20 at 4°C with gentle shaking, overnight.

For Research Use Only. Not for use in diagnostic and therapeutic procedures. Not for resale without express authorization.