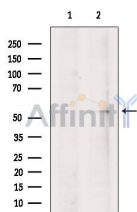


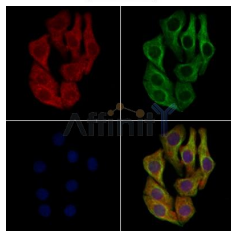
## IRG1 Ab

[Images\(3\)](#)

|               |  |                       |
|---------------|--|-----------------------|
| Cat.#: DF7723 | Concn.: ~1mg/ml  | Mol.Wt.: 55 KD        |
| Size:         | Source: Rabbit   | Clonality: Polyclonal |
| Application:  | WB 1:1000-3000, IF/ICC 1:100-1:500<br>*The optimal dilutions should be determined by the end user.   |                       |
| Reactivity:   | Human  |                       |
| Storage:      | Rabbit IgG in phosphate buffered saline , pH 7.4, 150mM NaCl, 0.02% sodium azide and 50% glycerol. Store at -20 °C. Stable for 12 months from date of receipt. |                       |
| Purification: | The antiserum was purified by peptide affinity chromatography using SulfoLink™ Coupling Resin (Thermo Fisher Scientific).                                      |                       |
| Immunogen:    | A synthesized peptide derived from human IRG1, corresponding to a region within C-terminal amino acids.  |                       |
| Uniprot:      | A6NK06   |                       |



Western blot analysis of extracts from HeLa cells, using IRG1 Ab. The lane on the left was treated with blocking peptide.



DF7723 staining HeLa cells by IF/ICC. The samples were fixed with PFA and permeabilized in 0.1% Triton X-100, then blocked in 10% serum for 45 minutes at 25°C. Samples were then incubated with primary Ab(DF7723 1:200) and mouse anti-beta tubulin Ab(T0023 1:200) for 1 hour at 37°C. An AlexaFluor594 conjugated goat anti-rabbit IgG(H+L) Ab(Red) and an AlexaFluor488 conjugated goat anti-mouse IgG(H+L) Ab(Green) were used as the secondary Ab. The nuclear counter stain is DAPI(blue).

**IMPORTANT:** For western blot, incubate membrane with diluted primary Ab in 5% w/v milk , 1X TBS, 0.1% Tween@20 at 4°C with gentle shaking, overnight.

For Research Use Only. Not for use in diagnostic and therapeutic procedures. Not for resale without express authorization.