

Phospho-RSK1 p90 (Ser380) Ab

[Images\(1\)](#)

Cat.#: DF7702 Concn.: ~1mg/ml Mol.Wt.: 90 kDa
Size: Source: Rabbit Clonality: Polyclonal

Application: WB 1:1000-3000, IF/ICC 1:100-1:500
*The optimal dilutions should be determined by the end user.

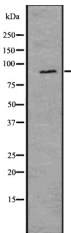
Reactivity: Human,Mouse,Rat

Storage: Rabbit IgG in phosphate buffered saline , pH 7.4, 150mM NaCl, 0.02% sodium azide and 50% glycerol. Store at -20 °C. Stable for 12 months from date of receipt.

Purification: The Ab is from purified rabbit serum by affinity purification via sequential chromatography on phospho-peptide and non-phospho-peptide affinity columns.

Immunogen: A synthesized peptide derived from human RSK1 p90 around the phosphorylation site of Ser380.

Uniprot: Q15418



Western blot analysis of RSK1 p90 (phospho S380) using Jurkat whole lysates.

IMPORTANT: For western blot, incubate membrane with diluted primary Ab in 5% w/v milk , 1X TBS, 0.1% Tween@20 at 4°C with gentle shaking, overnight.

For Research Use Only. Not for use in diagnostic and therapeutic procedures. Not for resale without express authorization.