

## TGIF1 Ab

[Images\(2\)](#)

Cat.#: DF7689                                      Concn.: ~1mg/ml                                      Mol.Wt.: 45 kDa  
Size:    Source: Rabbit    Clonality: Polyclonal

Application:                                      WB 1:1000-3000, IF/ICC 1:100-1:500  
  \*The optimal dilutions should be determined by the end user.

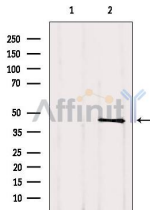
Reactivity:                                        Human,Mouse,Rat

Storage:    Rabbit IgG in phosphate buffered saline , pH 7.4, 150mM NaCl, 0.02% sodium azide and 50% glycerol. Store at -20 °C. Stable for 12 months from date of receipt.

Purification:                                    The antiserum was purified by peptide affinity chromatography using SulfoLink™ Coupling Resin (Thermo Fisher Scientific).

Immunogen:                                      A synthesized peptide derived from human TGIF1, corresponding to a region within C-terminal amino acids.

Uniprot:    Q15583



Western blot analysis of extracts from HeLa, using TGIF1 Ab. Lane 1 was treated with the blocking peptide.

**IMPORTANT:** For western blot, incubate membrane with diluted primary Ab in 5% w/v milk , 1X TBS, 0.1% Tween@20 at 4°C with gentle shaking, overnight.

For Research Use Only. Not for use in diagnostic and therapeutic procedures. Not for resale without express authorization.