

# MMP12 Ab

[References\(1\)](#) [Images\(4\)](#)

Cat.#: DF7686                                      Concn.: ~1mg/ml                                      Mol.Wt.: 54 kDa  
 Size:    Source: Rabbit    Clonality: Polyclonal

Application:                                      WB 1:1000-3000, IF/ICC 1:100-1:500  
 \*The optimal dilutions should be determined by the end user.

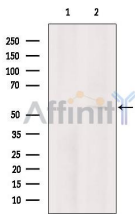
Reactivity:                                      Human,Monkey

Storage:    Rabbit IgG in phosphate buffered saline , pH 7.4, 150mM NaCl, 0.02% sodium azide and 50% glycerol. Store at -20 °C. Stable for 12 months from date of receipt.

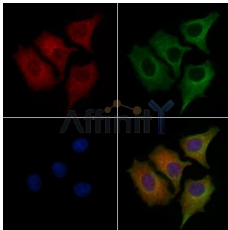
Purification:                                      The antiserum was purified by peptide affinity chromatography using SulfoLink™ Coupling Resin (Thermo Fisher Scientific).

Immunogen:                                      A synthesized peptide derived from human MMP12, corresponding to a region within the internal amino acids.

Uniprot:    P39900



Western blot analysis of extracts from COS-7, using MMP12 Ab. The lane on the left was treated with blocking peptide.



DF7686 staining HepG2 cells by IF/ICC. The samples were fixed with PFA and permeabilized in 0.1% Triton X-100, then blocked in 10% serum for 45 minutes at 25°C. Samples were then incubated with primary Ab(DF7686 1:200) and mouse anti-beta tubulin Ab(T0023 1:200) for 1 hour at 37°C. An AlexaFluor594 conjugated goat anti-rabbit IgG(H+L) Ab(Red) and an AlexaFluor488 conjugated goat anti-mouse IgG(H+L) Ab(Green) were used as the secondary Ab. The nuclear counter stain is DAPI(blue).

**IMPORTANT:** For western blot, incubate membrane with diluted primary Ab in 5% w/v milk , 1X TBS, 0.1% Tween@20 at 4°C with gentle shaking, overnight.

For Research Use Only. Not for use in diagnostic and therapeutic procedures. Not for resale without express authorization.