

## Flt3 ligand Ab

[Images\(2\)](#)

|               |                 |                       |
|---------------|-----------------|-----------------------|
| Cat.#: DF7676 | Concn.: ~1mg/ml | Mol.Wt.: 26 kDa       |
| Size:         | Source: Rabbit  | Clonality: Polyclonal |

Application: WB 1:1000-3000, IF/ICC 1:100-1:500  
 \*The optimal dilutions should be determined by the end user.

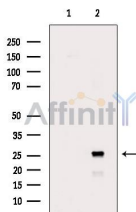
Reactivity: Human,Rat

Storage: Rabbit IgG in phosphate buffered saline , pH 7.4, 150mM NaCl, 0.02% sodium azide and 50% glycerol. Store at -20 °C. Stable for 12 months from date of receipt.

Purification: The antiserum was purified by peptide affinity chromatography using SulfoLink™ Coupling Resin (Thermo Fisher Scientific).

Immunogen: A synthesized peptide derived from human Flt3 ligand, corresponding to a region within C-terminal amino acids.

Uniprot: P49771



Western blot analysis of extracts from Rat muscle, using FLT3LG Ab. The lane on the left was treated with blocking peptide.

**IMPORTANT:** For western blot, incubate membrane with diluted primary Ab in 5% w/v milk , 1X TBS, 0.1% Tween@20 at 4°C with gentle shaking, overnight.

For Research Use Only. Not for use in diagnostic and therapeutic procedures. Not for resale without express authorization.