

## RAD18 Ab

[Images\(1\)](#)

Cat.#: AF0669                      Concn.: ~1mg/ml                      Mol.Wt.: 56kDa  
Size:                                      Source: Rabbit                              Clonality: Polyclonal

**Application:** WB 1:500-1:2000, IF/ICC 1:100-1:500  
\*The optimal dilutions should be determined by the end user.

**Reactivity:** Human,Rat

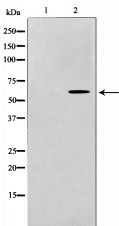
**Storage:** Rabbit IgG in phosphate buffered saline , pH 7.4, 150mM NaCl, 0.02% sodium azide and 50% glycerol. Store at -20 °C. Stable for 12 months from date of receipt.

**Purification:** The antiserum was purified by peptide affinity chromatography using SulfoLink™ Coupling Resin (Thermo Fisher Scientific).

**Immunogen:** A synthesized peptide derived from human RAD18, corresponding to a region within the internal amino acids.

**Uniprot:** Q9NS91

**Description:** RAD18 a structural maintenance of chromosomes (SMC) protein involved in postreplication repair of UV-damaged DNA. Has ssDNA binding activity. Interacts with Rad6 through a conserved ring-finger motif. Rad6 is an ubiquitin-conjugating enzyme required for post-replication repair of damaged DNA.



Western blot analysis on LOVO cell lysates using RAD18 Ab, The lane on the left was treated with the antigen-specific peptide.

**IMPORTANT:** For western blot, incubate membrane with diluted primary Ab in 5% w/v milk , 1X TBS, 0.1% Tween@20 at 4°C with gentle shaking, overnight.

For Research Use Only. Not for use in diagnostic and therapeutic procedures. Not for resale without express authorization.