

## Phospho-p57 Kip2 (Thr310) Ab

[Images\(1\)](#)

Cat.#: DF2992                      Concn.: ~1mg/ml                      Mol.Wt.: 57 KD  
Size:                                      Source: Rabbit                          Clonality: Polyclonal

Application:                          WB 1:1000-3000, IF/ICC 1:100-1:500  
\*The optimal dilutions should be determined by the end user.

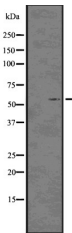
Reactivity:                              Human

Storage:                                Rabbit IgG in phosphate buffered saline , pH 7.4, 150mM NaCl, 0.02% sodium azide and 50% glycerol. Store at -20 °C. Stable for 12 months from date of receipt.

Purification:                          The Ab is from purified rabbit serum by affinity purification via sequential chromatography on phospho-peptide and non-phospho-peptide affinity columns.

Immunogen:                            A synthesized peptide derived from human p57 Kip2 around the phosphorylation site of Thr310.

Uniprot:                                 P49918



Western blot analysis of Phospho-p57 Kip2 (Thr310) using HUVEC whole cell lysates

**IMPORTANT:** For western blot, incubate membrane with diluted primary Ab in 5% w/v milk , 1X TBS, 0.1% Tween@20 at 4°C with gentle shaking, overnight.

For Research Use Only. Not for use in diagnostic and therapeutic procedures. Not for resale without express authorization.