

## Phospho-PPP1CA (Thr320) Ab

[Images\(1\)](#)

Cat.#: DF2990	Concn.: ~1mg/ml	Mol.Wt.: 38KD
Size:	Source: Rabbit	Clonality: Polyclonal

Application: WB 1:1000-3000  
\*The optimal dilutions should be determined by the end user.

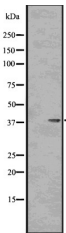
Reactivity: Human

Storage: Rabbit IgG in phosphate buffered saline , pH 7.4, 150mM NaCl, 0.02% sodium azide and 50% glycerol. Store at -20 °C. Stable for 12 months from date of receipt.

Purification: The Ab is from purified rabbit serum by affinity purification via sequential chromatography on phospho-peptide and non-phospho-peptide affinity columns.

Immunogen: A synthesized peptide derived from human PP1 $\gamma$  around the phosphorylation site of Thr320.

Uniprot: P62136



Western blot analysis of Phospho-PP1 $\gamma$  (Thr320) using HepG2 whole cell lysates

**IMPORTANT:** For western blot, incubate membrane with diluted primary Ab in 5% w/v milk , 1X TBS, 0.1% Tween@20 at 4°C with gentle shaking, overnight.

For Research Use Only. Not for use in diagnostic and therapeutic procedures. Not for resale without express authorization.