

Phospho-PAK1/2/3 (Ser144+Ser141+Ser139) Ab

[Images\(1\)](#)

Cat.#: DF2948
Size:

Concn.: ~1mg/ml
Source: Rabbit

Mol.Wt.: 65kDa
Clonality: Polyclonal

Application:

WB 1:1000-3000, IHC 1:50-1:200, IF/ICC

*The optimal dilutions should be determined by the end user.

Reactivity:

Human,Mouse,Rat

Storage:

Rabbit IgG in phosphate buffered saline , pH 7.4, 150mM NaCl, 0.02% sodium azide and 50% glycerol. Store at -20 °C. Stable for 12 months from date of receipt.

Purification:

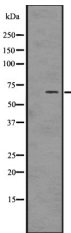
The Ab is from purified rabbit serum by affinity purification via sequential chromatography on phospho-peptide and non-phospho-peptide affinity columns.

Immunogen:

A synthesized peptide derived from human PAK1/2/3 around the phosphorylation site of S144+S141+S139.

Uniprot:

O75914/Q13153/Q13177



Western blot analysis of Phospho-PAK1/2/3 (S144+S141+S139) using HT-29 whole cell lysates

IMPORTANT: For western blot, incubate membrane with diluted primary Ab in 5% w/v milk , 1X TBS, 0.1% Tween@20 at 4°C with gentle shaking, overnight.

For Research Use Only. Not for use in diagnostic and therapeutic procedures. Not for resale without express authorization.