

## Mono-Di-Tri-Histone H3 (Lys14)/H3K14me1/2/3 Ab

[Images\(1\)](#)

Cat.#: DF2931                      Concn.: ~1mg/ml                      Mol.Wt.: 15kDa  
Size:                                      Source: Rabbit                              Clonality: Polyclonal

Application:                      WB 1:1000-3000, IF/ICC  
    \*The optimal dilutions should be determined by the end user.

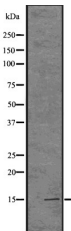
Reactivity:                      Human,Mouse

Storage:                              Rabbit IgG in phosphate buffered saline , pH 7.4, 150mM NaCl, 0.02% sodium azide and 50% glycerol. Store at -20 °C. Stable for 12 months from date of receipt.

Purification:                      The antiserum was purified by peptide affinity chromatography using SulfoLink™ Coupling Resin (Thermo Fisher Scientific).

Immunogen:                      A synthetic methylated peptide derived from human Mono-Di-Tri-Histone H3 around the methylation site of Lys14.

Uniprot:                              P68431/P84243/Q16695



Western blot analysis of Histone H3 (mono+di+tri methyl K14) using HUVEC whole cell lysates

**IMPORTANT:** For western blot, incubate membrane with diluted primary Ab in 5% w/v milk , 1X TBS, 0.1% Tween@20 at 4°C with gentle shaking, overnight.

For Research Use Only. Not for use in diagnostic and therapeutic procedures. Not for resale without express authorization.