

TAF6L Ab

[Images\(1\)](#)

Cat.#: AF0691	Concn.: ~1mg/ml	Mol.Wt.: 68kDa
Size:	Source: Rabbit	Clonality: Polyclonal

Application: WB 1:500-1:2000, IF/ICC 1:100-1:500

*The optimal dilutions should be determined by the end user.

Reactivity: Human,Mouse

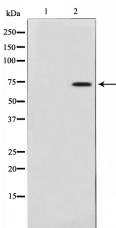
Storage: Rabbit IgG in phosphate buffered saline , pH 7.4, 150mM NaCl, 0.02% sodium azide and 50% glycerol. Store at -20 °C. Stable for 12 months from date of receipt.

Purification: The antiserum was purified by peptide affinity chromatography using SulfoLink™ Coupling Resin (Thermo Fisher Scientific).

Immunogen: A synthesized peptide derived from human TAF6L, corresponding to a region within N-terminal amino acids.

Uniprot: Q9Y6J9

Description: TAF6L Functions as a component of the PCAF complex. The PCAF complex is capable of efficiently acetylating histones in a nucleosomal context. The PCAF complex could be considered as the human version of the yeast SAGA complex. Belongs to the TAF6 family. The PCAF complex is composed of a number of TBP- associated factors (TAFs), such as TAF5, TAF5L, TAF6, TAF6L, TAF9, TAF10 and TAF12, PCAF, and also PCAF-associated factors (PAFs), such as TADA2L/ADA2, TADA3L/ADA3 and SPT3. Component of the STAGA transcription coactivator-HAT complex, at least composed of SUPT3H, GCN5L2, TAF5L, TAF6L, SUPT7L, TADA3L, TAD1L, TAF10, TAF12, TRRAP and TAF9.



Western blot analysis on 293 cell lysates using TAF6L Ab, The lane on the left was treated with the antigen-specific peptide.

IMPORTANT: For western blot, incubate membrane with diluted primary Ab in 5% w/v milk , 1X TBS, 0.1% Tween@20 at 4°C with gentle shaking, overnight.

For Research Use Only. Not for use in diagnostic and therapeutic procedures. Not for resale without express authorization.