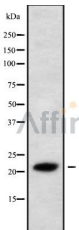


IL28A Ab

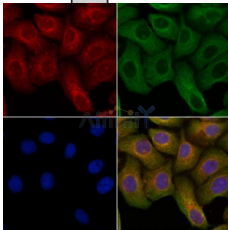
[Images\(2\)](#)

Cat.#: DF10159	Concn.: ~1mg/ml	Mol.Wt.: 22 kDa
Size:	Source: Rabbit	Clonality: Polyclonal

Application:	WB 1:1000-3000, IF/ICC 1:100-1:500 *The optimal dilutions should be determined by the end user.
Reactivity:	Human
Storage:	Rabbit IgG in phosphate buffered saline , pH 7.4, 150mM NaCl, 0.02% sodium azide and 50% glycerol. Store at -20 °C. Stable for 12 months from date of receipt.
Purification:	The antiserum was purified by peptide affinity chromatography using SulfoLink™ Coupling Resin (Thermo Fisher Scientific).
Immunogen:	A synthesized peptide derived from human IL28A, corresponding to a region within N-terminal amino acids.
Uniprot:	Q8IZJ0



Western blot analysis IL28A using 293 whole cell lysates



DF10159 staining HeLa cells by IF/ICC. The samples were fixed with PFA and permeabilized in 0.1% Triton X-100, then blocked in 10% serum for 45 minutes at 25°C. Samples were then incubated with primary Ab(DF10159) and mouse anti-beta tubulin Ab(T0023) for 1 hour at 37°C. An AlexaFluor594 conjugated goat anti-rabbit IgG(H+L) Ab(Red) and an AlexaFluor488 conjugated goat anti-mouse IgG(H+L) Ab(Green) were used as the secondary Ab. The nuclear counter stain is DAPI(blue).

IMPORTANT: For western blot, incubate membrane with diluted primary Ab in 5% w/v milk , 1X TBS, 0.1% Tween@20 at 4°C with gentle shaking, overnight.

For Research Use Only. Not for use in diagnostic and therapeutic procedures. Not for resale without express authorization.