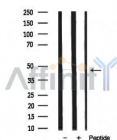


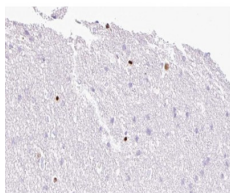
## MOK Ab

[References\(1\)](#) [Images\(2\)](#)

Cat.#: AF0779 Size:	Concn.: ~1mg/ml Source: Rabbit	Mol.Wt.: 48kDa Clonality: Polyclonal
Application:	WB 1:500-1:2000, IHC 1:50-1:200 *The optimal dilutions should be determined by the end user.	
Reactivity:	Human,Rat	
Storage:	Rabbit IgG in phosphate buffered saline , pH 7.4, 150mM NaCl, 0.02% sodium azide and 50% glycerol. Store at -20 °C. Stable for 12 months from date of receipt.	
Purification:	The antiserum was purified by peptide affinity chromatography using SulfoLink™ Coupling Resin (Thermo Fisher Scientific).	
Immunogen:	A synthesized peptide derived from human MOK, corresponding to a region within the internal amino acids.	
Uniprot:	Q9UQ07	
Description:	MOK a CMGC protein kinase of the RCK family. Possesses a Thr-Glu-Tyr motif in the activation loop domain, as do classical MAP kinases. Associates with and is apparently stabilized by HSP90.	



Western blot analysis on rat brain lysates using MOK Ab



AF0779 at 1/100 staining human Brain tissue sections by IHC-P. The tissue was formaldehyde fixed and a heat mediated antigen retrieval step in citrate buffer was performed. The tissue was then blocked and incubated with the Ab for 1.5 hours at 22°C. An HRP conjugated goat anti-rabbit Ab was used as the secondary Ab.

**IMPORTANT:** For western blot, incubate membrane with diluted primary Ab in 5% w/v milk , 1X TBS, 0.1% Tween@20 at 4°C with gentle shaking, overnight.



**Affinity Biosciences**

website: [www.affbiotech.com](http://www.affbiotech.com)

order: [order@affbiotech.com](mailto:order@affbiotech.com)

---

For Research Use Only. Not for use in diagnostic and therapeutic procedures. Not for resale without express authorization.